



Mitsubishi L200

Series 6 2019+

Product Code 29220

If you require any help with installation please contact us: info@trucker.se

1) Please check you have all the required parts before starting installation:

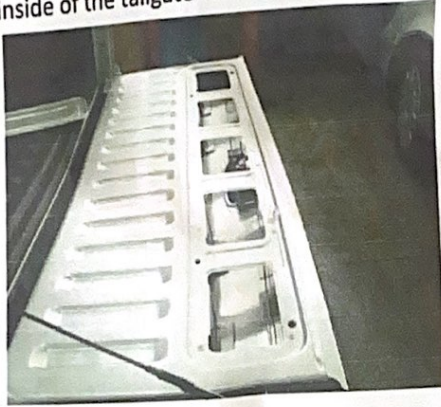
- 1 x baseplate and actuator kit
- 1 x wiring loom
- 8-10 x cable ties
- 2 x scotch locks - please note that soldering is recommended
- 1 x convoluted tubing - to protect wiring harness

2) You will need the following tools:

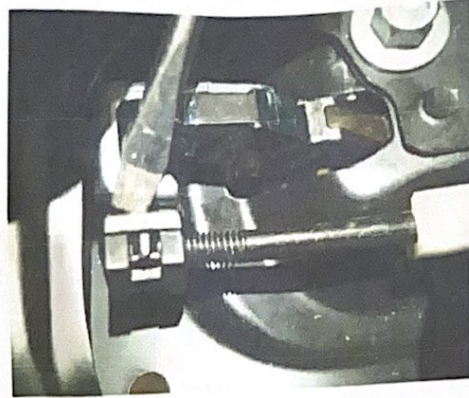
- Screwdriver (to remove tailgate panel)
- Soldering equipment
- Thin nosed pliers (for rod connector removal)
- Pliers (to crimp scotch lock wire connectors - *optional*)



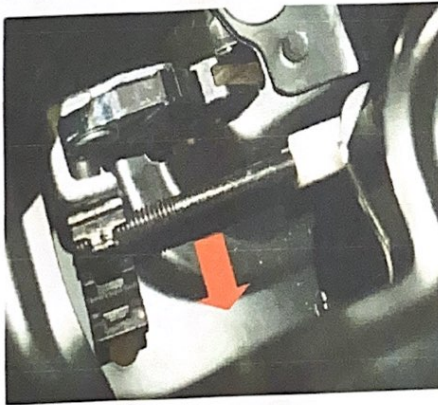
3) Open tailgate; undo 10 screws and remove metal panel to allow access into the inside of the tailgate



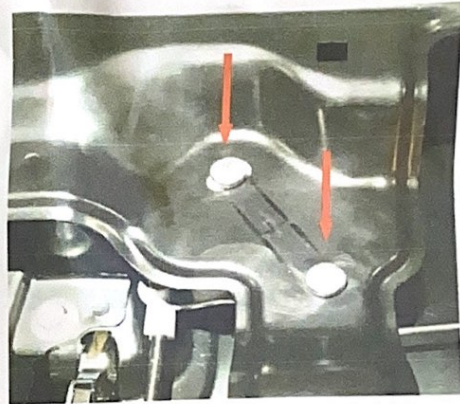
4) Locate the handle actuator rod. Use a slotted screwdriver to carefully prize open the clip



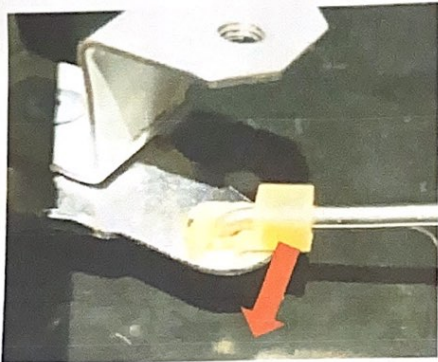
5) Prise rod from clip by pushing knurled end towards right hand side of tailgate



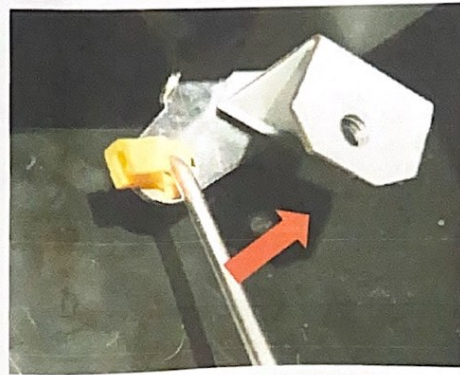
6) Remove two screws to release tailgate rod actuator mechanism



7) Release each tailgate rod by pulling orange clip away from rod



8) Lift each rod out of orange clip. Remove tailgate rod actuator mechanism from tailgate



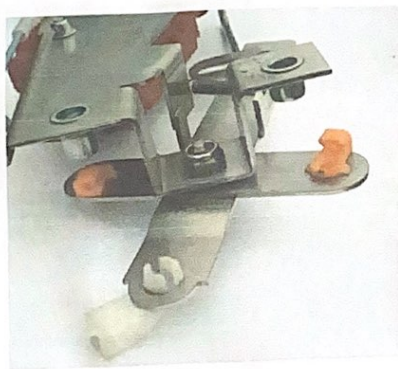
9) Separate handle actuator rod from end of clip and lift out rod



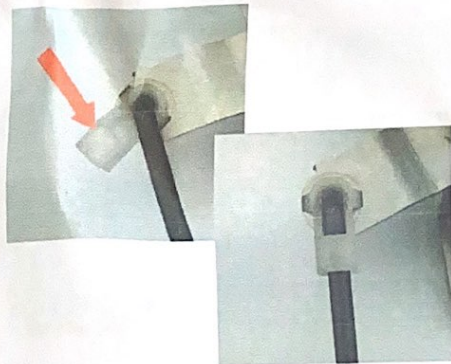
10) Remove white and orange clips from original mechanism by carefully squeezing clip tails together with pliers or with fingers. Push clip out of mechanism



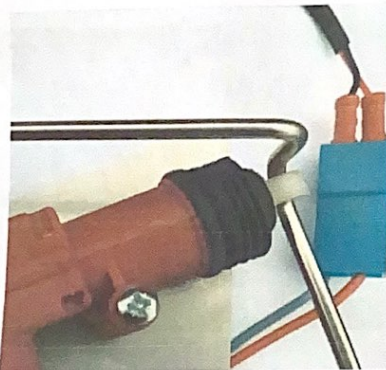
11) Push clips into Eagle actuator kit as shown



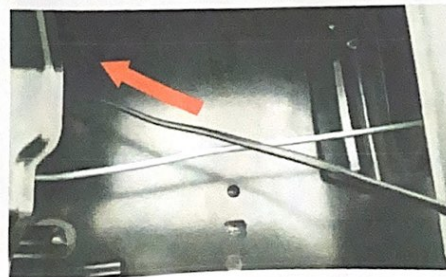
12) Push the handle actuator rod into the clip and close the clip onto the rod



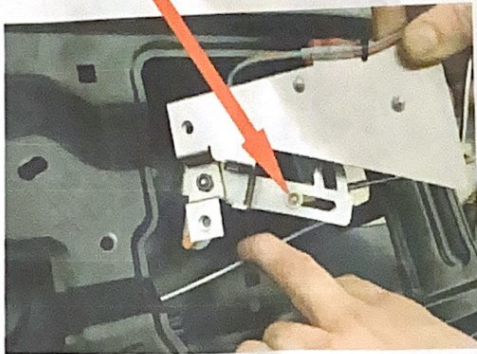
13) Connect wiring loom to the mechanism
Red to Red and Black to Blue



14) Thread wiring loom into tailgate



15) Ease actuator kit into the tailgate. The kit should be in the unlocked position (yellow clip nearest the pivot point—motor arm retracted)



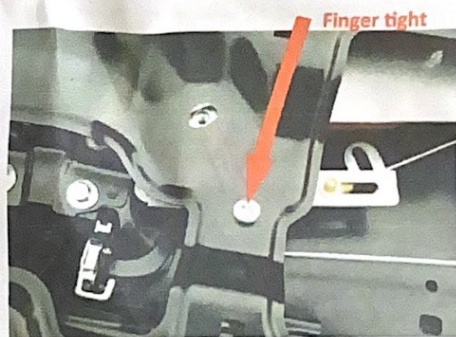
16) Connect the furthest tailgate rod into the clip and close the clip onto the rod



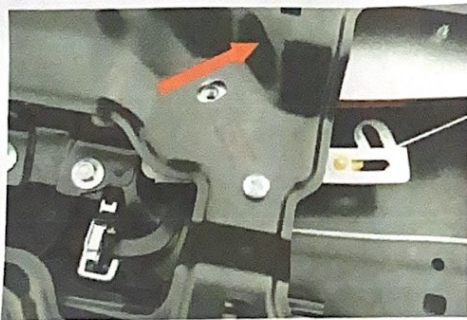
17) Connect the nearest tailgate rod into the clip and close the clip onto the rod



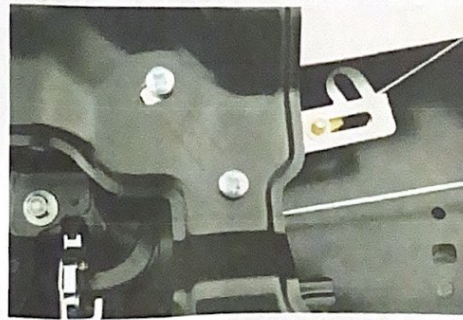
18) Bolt the Eagle actuator kit to the tailgate using the screws and shake proof washers removed in step 6



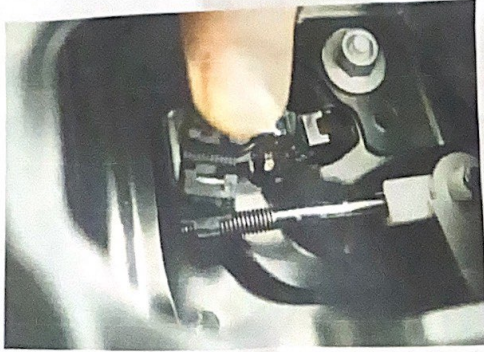
19) Rotate the mechanism to take up any slack in the tailgate rods



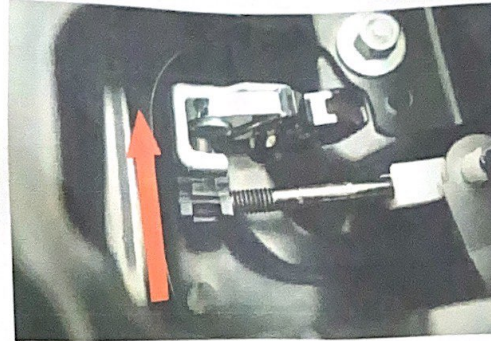
20) Insert second screw and tighten both securely



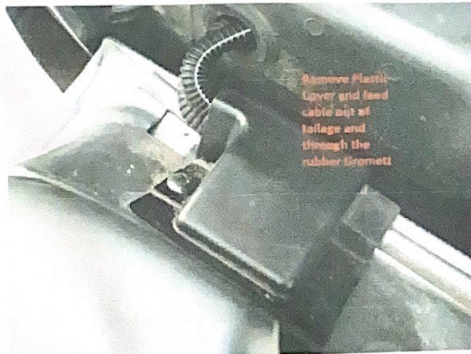
21) Press threaded part of handle actuator rod into the black handle clip



22) Close the clip onto the rod. Ensure that the threaded part sits across the full width of the clip



23) Feed Cable out of the tailgate on passenger's side. Use convoluted tubing provided to protect cable



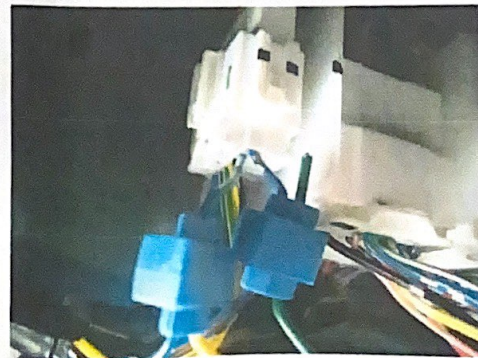
24) Feed cable along the passenger's side of the vehicle and up into the passenger's foot well. To gain access into the cab there is a grommet under the passenger's foot well; feed the cable through this grommet.

Reach under the carpet beneath the passenger's seat and pull the cable into the cab

25) Remove passenger's side door sill guard and kick plate to access vehicle's wiring harness



26) Connect the central locking kit into the vehicle's central locking loom



27) Solder the wiring loom into vehicle electrics. You may use the Scotch Locks provided but soldering is recommended. Please note that we advise that any connection is appropriately and securely covered with suitable insulation material



Eagle1 Lock wiring Loom	Vehicle Loom
Red	Blue with Black trace
Black	Blue with Red trace

28) Test the kit by clicking the central locking and checking that the tailgate locks and unlocks. This is best done with the tailgate closed. Do not click continuously since the motor may over heat and fail. If everything works, replace the sill guard, kick plate and tailgate cover.

Trucker AB recommends that installation is done by a qualified auto electrician. Any electrical faults due to improper installation will not be warranted by Trucker AB